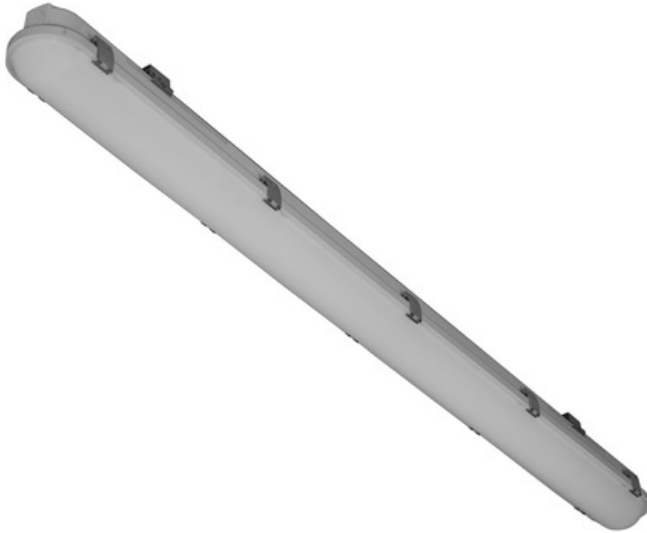


Industrial luminaire IP66



MODUS P 5000 MULTI, 3400/4150/5000/5600lm, LED 840, 1200mm PC body + cover, IP66, cont. assembly 3x1,5mm

Code: P5000M4NDMULTI/P1
EAN: 8596099150198



Luminaire properties

Product category:	Ceiling / wall luminaires	Effective luminous flux (lm):	5600
System power (W):	37	Luminaire efficacy (lm/W):	151
Rated lifetime L80/B50 (h):	80000	Degree of protection (IP):	IP66
Color housing:	Grey	Impact strength:	IK08
Ball-proof:	Yes		
Suitable for suspended mounting:	Yes		
Material housing:	Plastic	Light source included:	Yes
Suitable for surface mounting:	Yes	Suitable for ceiling mounting:	Yes

Light source

Light source type:	LED	Color temperature (K):	4000
Color rendering index CRI:	80-89	Replaceability:	Replaceable light source by professional, replaceable ballast

Optical system

Optical system:	CO	Light outlet:	Direct
Light sharing:	Symmetric	Material cover:	Plastic, opal

Dimensions

Length (mm):	1200	Width (mm):	88
Height/depth (mm):	82	Weight (kg):	1,5

Electrical values

Protection class:	I	Voltage type:	AC
Type of control gear:	LED operating device current-controlled	Nominal voltage (V):	220...240
Control gear included:	Yes	Type of wiring:	Through wiring included
No dim function:	Yes		
Indoor use only:	Yes		